

NEW

INNOTOOL

LOOK FORWARD



HIQUAD

T-SLOT MILLS TS_D03 / TS_M01

- For machining standardized T-slots acc. to DIN 650
- Strong and well-established HiQuad inserts
- Further corner radii can be realized
- Diameter range 25 - 58 mm

Product Description

Our existing range of radial T-slot mills had some limitations and was therefore not suitable for some of our customers. In particular, corner radii specified in DIN 650 for T-slots have not yet been sufficiently considered. Especially when machining larger T-slots with more demanding cutting parameters the SDMT08/SDMW08 inserts have reached their stability limits.

With our **HiQuad** inserts now we are able to offer the required corner radii as well as to achieve the necessary process reliability.

Even for any desired special corner radii the **HiQuad** inserts are ideally suited. Therefore we have decided to realign our range in this product segment.

Technical Features

The new Innotool T-slot mills in diameters $\varnothing 25$, $\varnothing 31$, $\varnothing 38.5$, $\varnothing 48$ and $\varnothing 58$ mm, with either Weldon or InnoFit adaption, are part of our standard offering now.

For exact dimensions please see the following catalog pages.

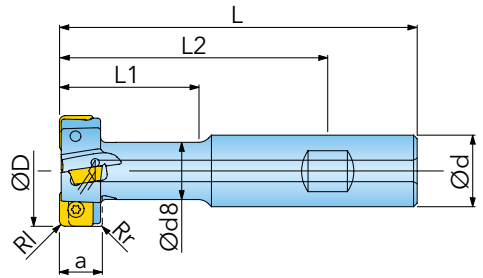
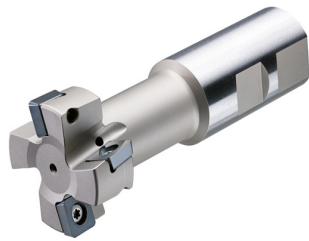


Advantages

- for machining standardized T-slots acc. to DIN 650
- available with Weldon or InnoFit-adaption
- strong and well-established HiQuad inserts
- further corner radii can be realized on request
- diameter range 25 - 58 mm

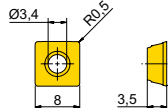


ADAPTION ACC. TO DIN 1835 B

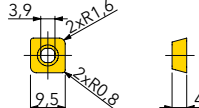


Designation	D	d	d8	L	L1	L2	a	Z	Z _{eff}	IK	kg	matching inserts
TS.025.001	25	16	13	85	31	61	11	2	1	✓	0,11	A
TS.031.001	31	20	16	100	39	75	12	4	2	✓	0,20	B
TS.039.001	38,5	25	19	110	49	78	16	4	2	✓	0,34	C/D
TS.048.001	48	32	25	125	60	89	20	4	2	✓	0,63	E
TS.058.001	58	32	31	140	75	104	26	6	2	✓	0,90	E

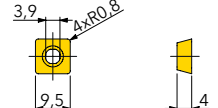
A SDMT080305N



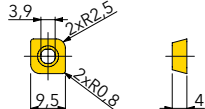
B SDES090416TN-002



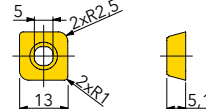
C SDES090408TN



D SDES090425TN-002



E SDES130525TN-002



Designation	fz(min/max)	Design	Grade							
			IN2505	IN4030						
SDMT080305N	0,13/0,17	positive geometry R0,5			●	●				
SDES090416TN-002	0,10/0,15	neutral geometry, chamfered 2xR0,8/2xR1,6				●	●			
SDES090408TN	0,10/0,15	neutral geometry, chamfered 4xR0,8				●	●			
SDES090425TN-002	0,10/0,15	neutral geometry, chamfered 2xR0,8/2xR2,5				●	●			
SDES130525TN-002	0,12/0,20	neutral geometry, chamfered 2xR1,0/2xR2,5				●	●			

● = P ● = M ● = K ● = N ● = S ○ = H

SPARE PARTS

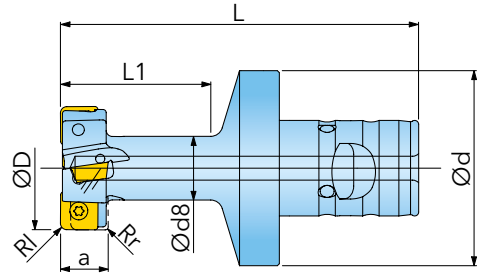
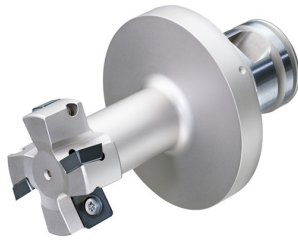


Diameter range

25	SM30-065-00 (2,0Nm) DS-T09S
31 - 38,5	SM30-075-R0 (2,4Nm) DS-T09S
48 - 58	SM40-100-R0 (4,5Nm) DS-T15S

① = Insert screw ② = Screw driver

MODULAR MILLING ADAPTOR INNOFIT



Designation	D	d	d8	L	L1	a	MOD	Z	Zeff			matching inserts
TS.025.002	25	49	13	45	31	11	40	2	1	✓	0,29	A
TS.031.002	31	49	16	55	38	12	40	4	2	✓	0,34	B
TS.039.002	38,5	49	19	65	48	16	40	4	2	✓	0,41	G D
TS.048.002	48	78	25	80	60	20	50	4	2	✓	1,13	E
TS.058.002	58	78	31	95	75	26	50	6	2	✓	1,42	E

A	B	C
SDMT080305N	SDES090416TN-002	SDES090408TN
D	E	
SDES090425TN-002	SDES130525TN-002	

Designation	fz(min/max)	Design	Grade	IN2505	IN4030
SDMT080305N	0,13/0,17	positive geometry R0,5			
SDES090416TN-002	0,10/0,15	neutral geometry, chamfered 2xR0,8/2xR1,6			
SDES090408TN	0,10/0,15	neutral geometry, chamfered 4xR0,8			
SDES090425TN-002	0,10/0,15	neutral geometry, chamfered 2xR0,8/2xR2,5			
SDES130525TN-002	0,12/0,20	neutral geometry, chamfered 2xR1,0/2xR2,5			

● = P ● = M ● = K ● = N ● = S ○ = H

SPARE PARTS



Diameter range

25	SM30-065-00 (2,0Nm)	DS-T09S
31 - 38,5	SM30-075-R0 (2,4Nm)	DS-T09S
48 - 58	SM40-100-R0 (4,5Nm)	DS-T15S

① = Insert screw ② = Screw driver