

NEW

INNOTOOL

LOOK FORWARD



INNOFIT

VIBRATION DAMPED PROLONGATION

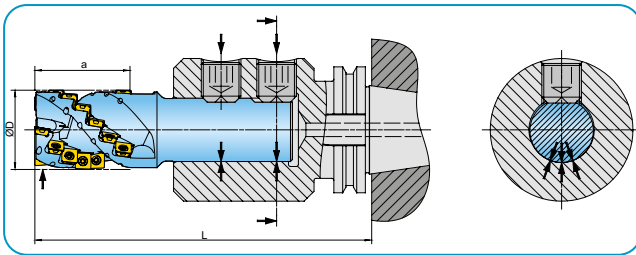
- Modular •*
- Stable •*
- Damped •*

Product Description

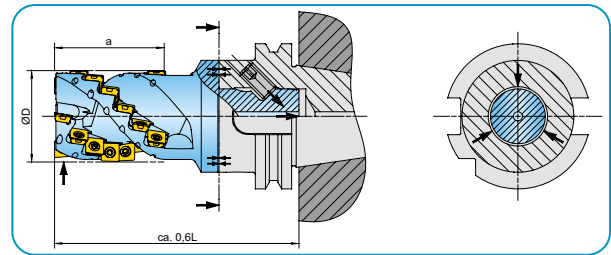
Our proven **InnoFit** modular adaption system is expanded by a new vibration damped prolongation for shell type milling cutter in the length of 200 mm.

This new **InnoFit** prolongation can be combined with all standardized spindle adaptors and solid prolongations. The vibration damped prolongations are available for centering- $\varnothing 27$, - $\varnothing 32$ und - $\varnothing 40$ mm at first in the modular Z5-size, i.e. outer \varnothing of 78mm, the smaller Z4-size with outer \varnothing of 61mm will follow soon in centering- $\varnothing 22$ and $\varnothing 27$.

Weldon versus InnoFit



Weldon -> vibrations



InnoFit -> 40% shorter

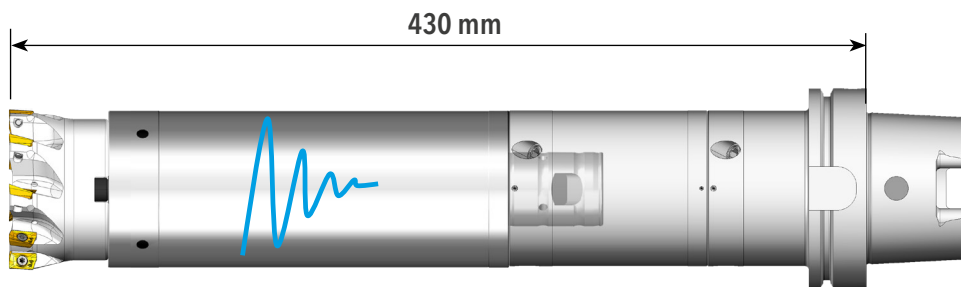
- High axial clamping force
- Compact tool assembly
- Large face contact

Application Range

The new standardized **InnoFit** damped prolongations are mainly designed to be applied at extremely long extensions when radial loads (milling) need to be handled.

Especially from $> 4xD$ often an operation is possible only by usage of vibration damped tool combinations.

The below picture shows a modular tool sample in an overall length of 430 mm with an milling cutter in $\varnothing 80$ mm.



EB.080.002

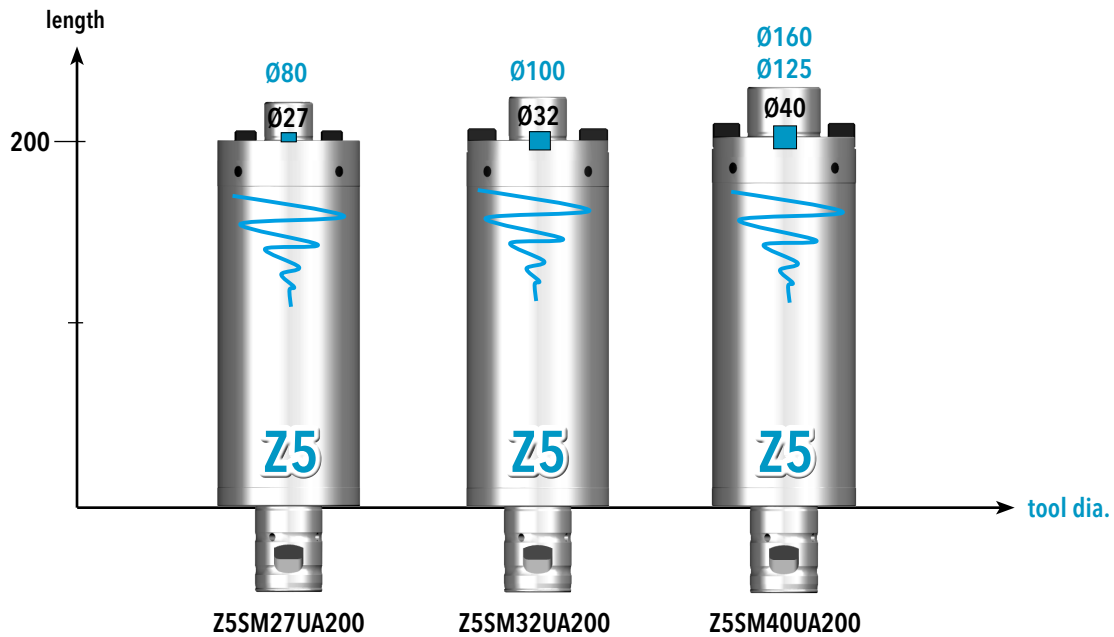
Z5SM27UA200

Z5Z5SA100

HSKA100Z5SA080

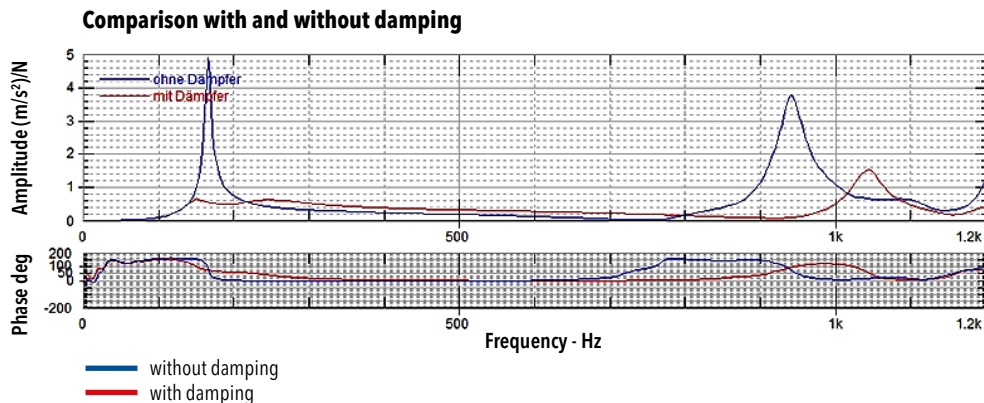
Technical Features

The standardized 200 mm **InnoFit** prolongations are designed and tuned for the typical standard milling tool weights according to each centering diameter and cannot be misaligned.

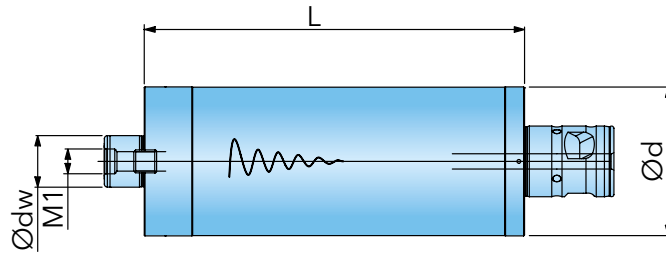


Advantages

- Better tool life due to damping.
- Increased productivity because:
 - a) larger DOC can be machined due to the damping effect and
 - b) often higher feed rates could be achieved with usage of a damped combination.
- At long tool combination a better surface quality can be obtained.
- Can not be misaligned!
- Modular applicable with **InnoFit** standard MOD50
- Significant improvement in damping versus standard prolongation (see graph)



INNOFIT MODULAR 50 (ANTI VIBRATION EXTENSION)



| Designation | d | dw | L | M1 | MOD | IK | kg |
|-------------|----|----|-----|-----|-----|----|-----|
| Z5SM27UA200 | 78 | 27 | 200 | M12 | 50 | ✓ | 9,1 |
| Z5SM32UA200 | 78 | 32 | 200 | M16 | 50 | ✓ | 9,2 |
| Z5SM40UA200 | 78 | 40 | 200 | M20 | 50 | ✓ | 9,3 |

Order-No.:xxx • version 3/20
Changes and printing errors reserved