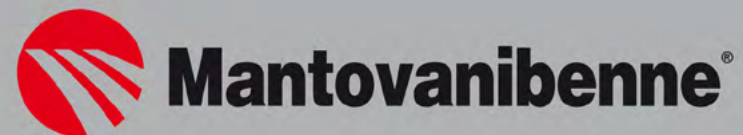




MCP

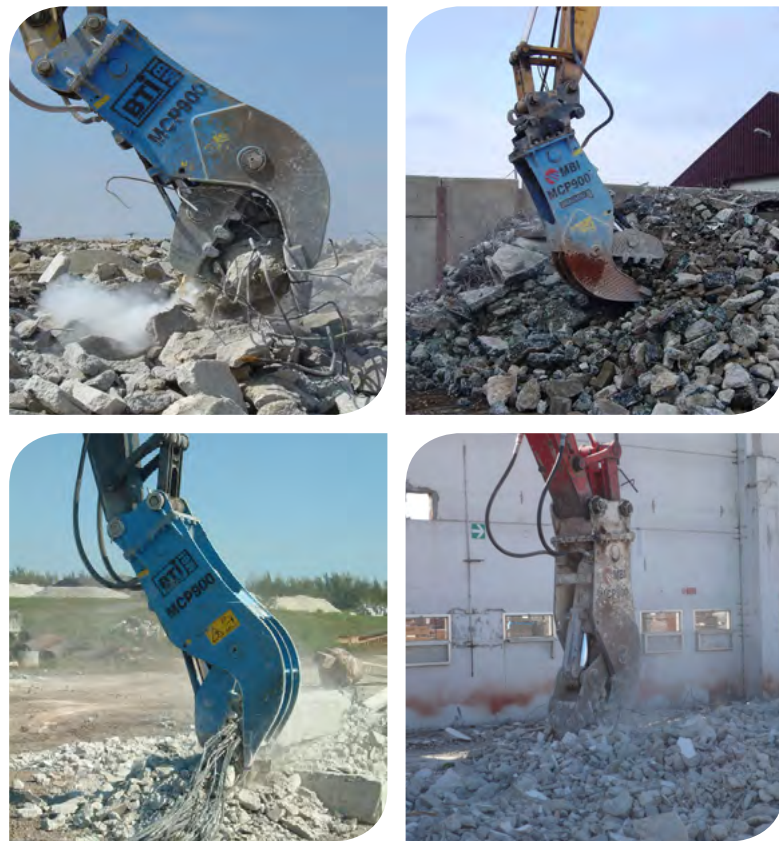


Mantovanibenne s.r.l. - Mirandola (Mo) Italy - Tel. +39 0535 615811 - Fax +39 0535 615830
sales@mantovanibenne.com

RIE-97877E 10/12 Rev. 00
Caratteristiche di prodotto e specifiche possono variare senza obbligo di preavviso.
We are constantly improving our products and therefore we reserve the right to change the design and technical specifications without prior notice.

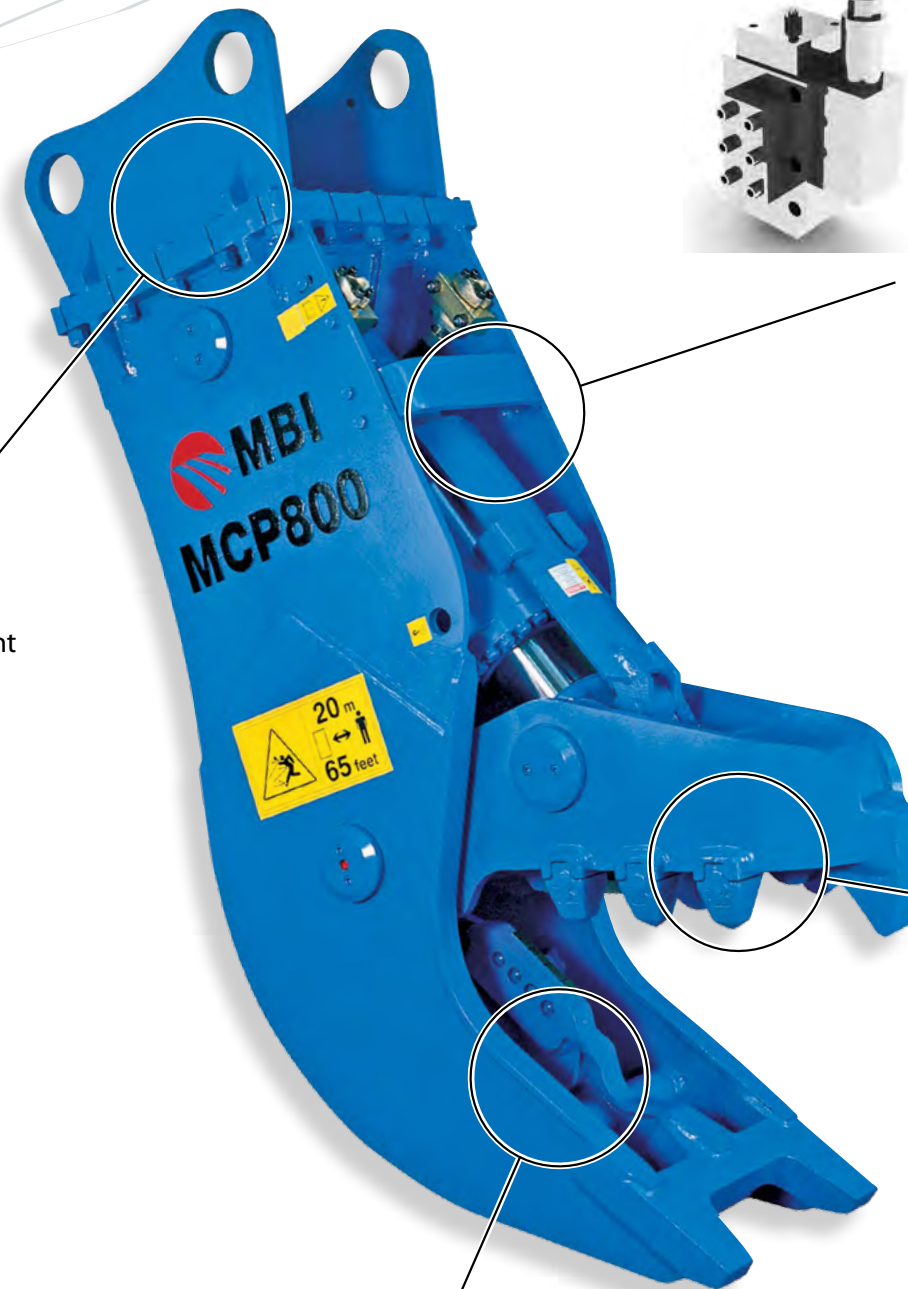
MCP Pulveriser

The MCP fixed Pulveriser is the ideal attachment for secondary demolition or rather for the work of reduction and fragmentation of the demolished material making disposal and recycling easier by separating the reinforced iron from the reinforced concrete.



Sturdy and compact structure

The pulveriser is built with high wear resistant materials with a hardness of HB400. The profile of the mouth is reinforced to further improve the resistance to wear and make the structure even more compact. The profile of the attachment makes loading the material easier.



A cylinder with great power and high speed

The high performance of the MCP pulveriser is guaranteed by the presence of a speed valve. This allows an increase in the number of opening and closing cycles of the pulveriser and for the hydraulic circuit of the excavator to be preserved.

Blades

On each model there are blades for rebars cutting. The blades can be turned into its own different sides to recover the correct cutting profile.

Excellent release of demolished material

The specific openings of the fixed body make the unloading of demolished material easier while maintaining the performance and productivity of the attachment.

We are constantly improving our products and therefore we reserve the right to change the design and technical specifications without prior notice.

TECHNICAL SPECIFICATIONS			
MODEL		MCP800	MCP910
Excavator Weight	t	18-25	25-35
Tool Weight*	kg	2050	2850
Opening	mm	850	1000
Height max.	mm	2070	2400
Hydraulic working pressure	bar	280-320	280-320
Oil flow	l/min	180-220	220-280

RIF. 97887/E

*Tool weight does include Mantovanibenne top bracket.