



# RP-IT

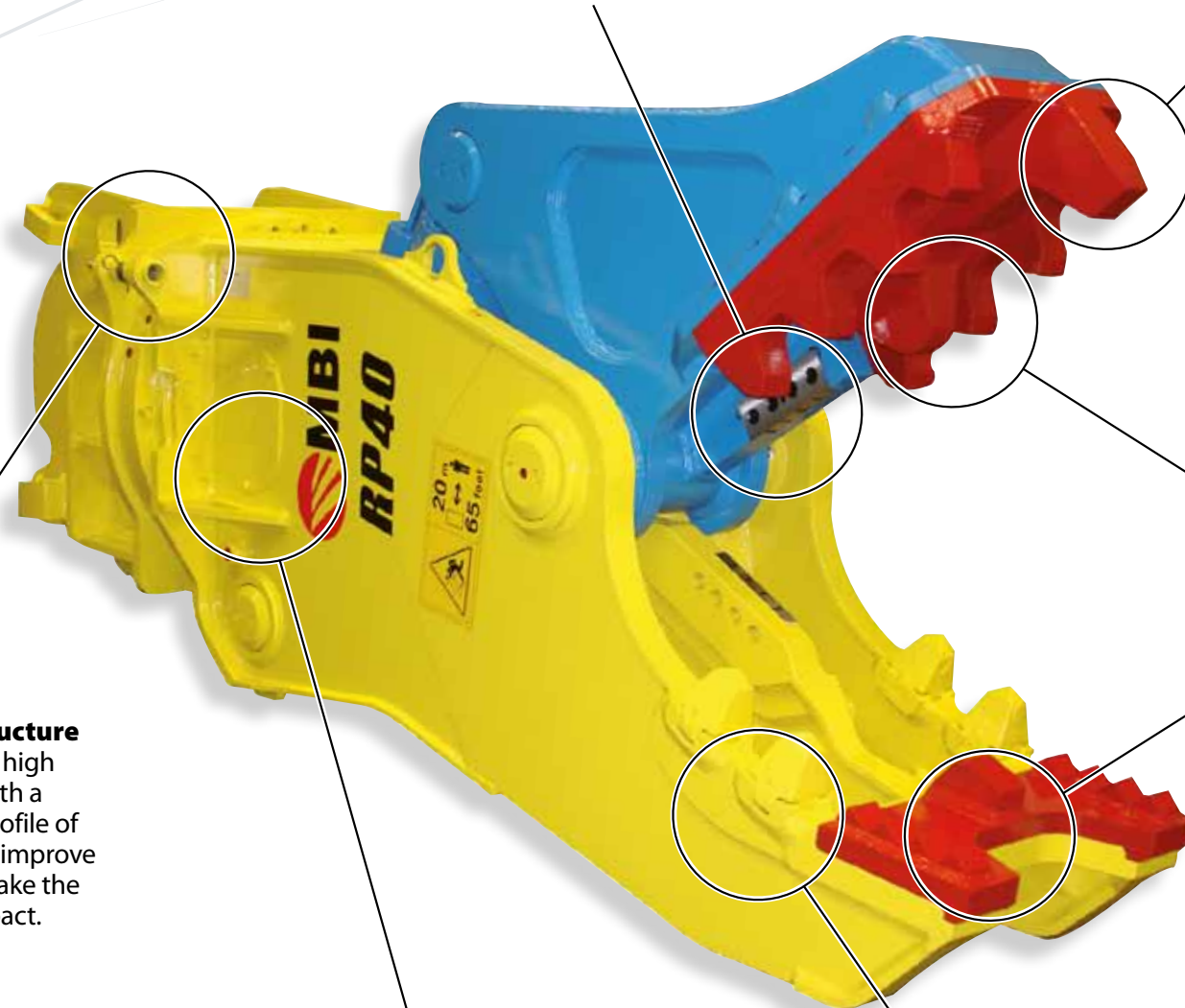


Mantovanibenne s.r.l. - Mirandola (Mo) Italy - Tel. +39 0535 615811 - Fax +39 0535 615830  
sales@mantovanibenne.com

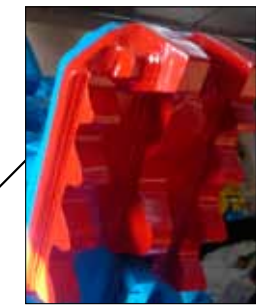
RIE-9787IT/E - 07/11 - Rev. 00  
Caratteristiche di prodotto e specifiche possono variare senza obbligo di preavviso.  
Les caractéristiques et les spécifications des produits peuvent être modifiées sans préavis.

# RP-IT Rotating Pulveriser

The RP-IT Rotating Pulveriser is the ideal attachment for many different types of work: it is suitable both for the real and proper primary demolition as well as for the following operations of reduction and fragmentation of the material which has been demolished making disposal and recycling easier.



**Blades**  
On each model there are blades for rebars cutting. These parts can be turned to different sides to recover the correct profile of the cutter.



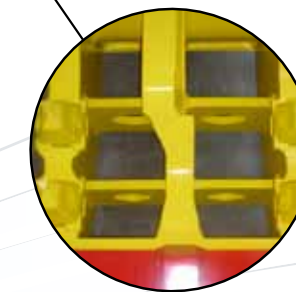
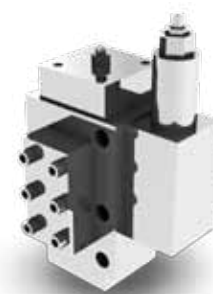
**Mobile jaw plate**  
This plate can be supplied with two top teeth to ensure greater production in secondary demolition operations.

**Sturdy and compact structure**  
The pulveriser is built with high wear resistant materials with a hardness of HB 400. The profile of the mouth is reinforced to improve the wear resistance and make the structure even more compact.



**Interchangeable parts**  
The design of the mouth of the new RP-IT pulveriser has been studied to increase the productivity of the attachment. By replacing the interchangeable worn parts it is possible to restore the original profile of the mouth to recover the original performance of the attachment.

**A cylinder with great power and high speed**  
The high performance of the RP-IT pulveriser is guaranteed by the presence of a speed valve. This allows an increase in the number of opening and closing cycles of the pulveriser and for the hydraulic circuit of the excavator to be preserved.



**Excellent release of demolished material**  
The specific openings of the fixed body make the unloading of demolished material easier while maintaining the performance and productivity of the attachment.

We are constantly improving our products and therefore we reserve the right to change the design and technical specifications without prior notice.

TECHNICAL SPECIFICATIONS		RP10-IT	RP16**	RP20-IT	RP30-IT	RP40-IT	RP50-IT	RP80-IT
Excavator Weight	t	10-18	16-23	18-26	26-32	32-45	45-60	60-90
Tool Weight**	kg	1100	1720	2000	2850	4100	5200	8200
Opening	mm	580	700	750	900	1000	1100	1250
Height max.	mm	1710	2020	2130	2400	2680	3000	3600
CRP plate		●	-	●	●	●	●	●
PP plate		○	-	●	●	●	●	●
Hydraulic working pressure	bar	300-350	300-350	300-350	300-350	300-350	300-350	300-350
Oil flow	l/min	100-180	180-200	180-200	200-220	220-280	280-320	500-600

RIF. 978811T/E

\*\*Tool weight does include Mantovanibenne top bracket. ○ Not available ● Available \* IT version not available