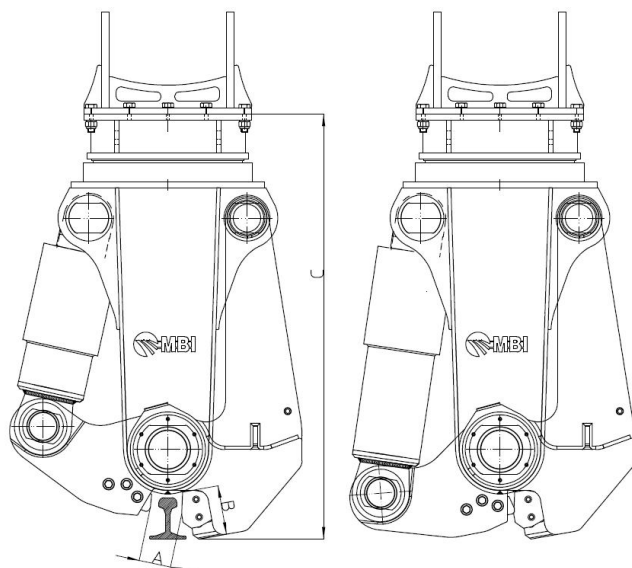


RAIL CUT

RC30R



Dimensions

			RC30R
Jaw opening	A	[mm]	140
Jaw depth	B	[mm]	200
Height	C	[mm]	1800

Technical bulletin

		RC30R
Excavator weight (bucket place)	[t]	25-35
Excavator weight (stick place)	[t]	15-24
Cylinder force	[t]	145
Weight *	[kg]	2650
Cutting force	[t]	310
Hydraulic working pressure	[bar]	320-350
Oil flow	[l/min]	200-250
Rotation type	----	360° H
Hydraulic motor max oil pressure	[bar]	90-100
Hydraulic motor oil flow	[l/min]	30-40
Time of closing at max oil flow	[s]	1,5
Time of opening at max oil flow	[s]	1,2
N° of cycles per minute at max oil flow	[cycles/min]	20
N° of revs per minute at max oil flow	[revs/min]	8,1
Hyd. ports size cylinder	----	1" SAE 6000 p.s.i.
Hyd. ports size rotation	----	½" GAS
Hyd. port size drain line	----	N.N.
Speed valve	----	YES
Interchangeable wear parts	----	YES
Automatic grease system	----	NO

* The tool weight, here noted, includes also the MBI's STD coupler.

RC30R is with bolted coupler.

N.N.: not needed. Refers to drain the Hydraulic rotation.

The noted performances have been achieved by the maximum pressure and capacity values.

Characteristics and specifics of product could be varied without obligation of notice.